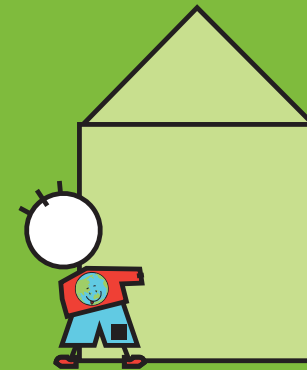




Printed on ENVIROCARE 100% Recycled Paper SCH/ENV 3A

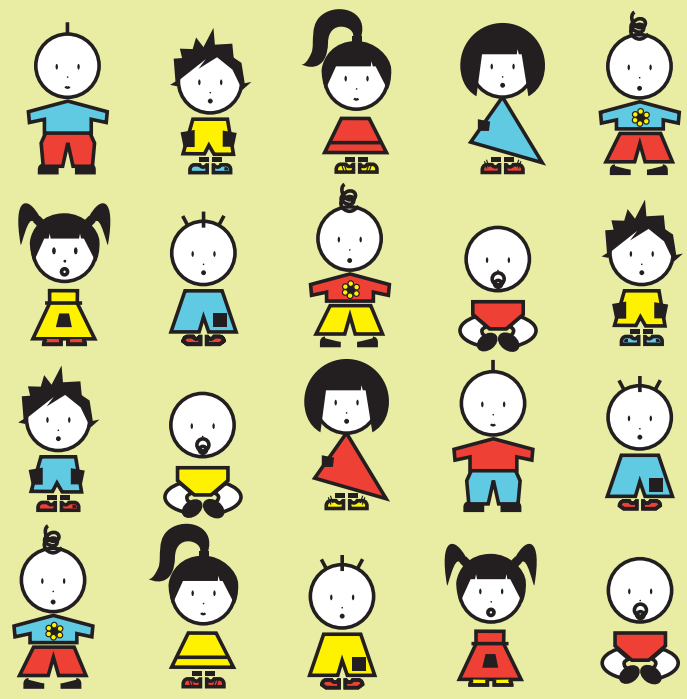
GREEN @ HOME



Schiavello environment

For further information please contact us at 1300 366 236 [www.schiavello.com](http://www.schiavello.com)

Schiavello



## contents

## page

being green	2
global warming	3
litter facts	5
being green @ home	6
home maintenance	8
indoor greening	9
domestic greening	12
driving green	15
green information	17

## why it is important to be green



The most important reason for looking after our environment is because our children and grandchildren will be living here in 2080. It is the most serious issue we face this century – a dead planet doesn't provide food, clean water or fresh air.

Everything we do has an impact on the environment, and being aware of this is the first step in the right direction.

Big issues such as global warming, damaging our natural resources, and destroying animal and plant life all directly affect our lives today and the lives of future inhabitants. This doesn't mean we can't change what we do to influence the future quality of life on earth.

*The most positive action you can take to help save your environment is to start in your own home.*

# what is global warming ?

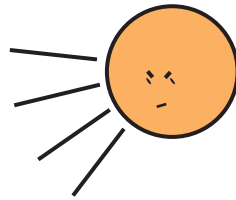
Scientists predict that rising global temperatures will affect humans, plants and animals by changing weather and raising sea levels.

Already, last century's temperature increases have contributed to record numbers of hot days and extreme weather events (rains, flash floods, droughts and hurricanes). This is known as global warming.

The stable global temperatures in the past are like a car parked in the sun, with its windows down. The heat absorbed by the air in the car is able to escape through the open windows and so the temperature remains stable. With the windows up, the heat energy cannot readily escape and so the temperature of the car gets hotter.



The earth is enveloped by a layer of gases that acts like the car windows – over centuries a balance had been established which was like the open windows, which created a stable temperature. As we have increased the concentration of the 'greenhouse' gases in recent times, these have stored more heat and warmed the earth and its inhabitants, just like closing the windows on the car.



# how do we damage our environment ?

The major influence on the global temperature has been the increasing amount of carbon dioxide (CO<sub>2</sub>) in the atmosphere.

The major cause of this is the burning of fossil fuels (oil, petrol, gas, and coal), mostly to produce electricity and to power our motor vehicles.

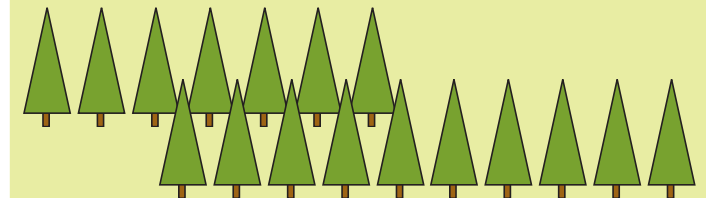
A petrol engined car produces 3kgs of CO<sub>2</sub> for each 1kg of fuel it burns.

For an average car this will produce 5 - 10 tonnes of CO<sub>2</sub> each year.

For a car that does 25,000km per year an improvement of 1litre per 100km of fuel consumption will reduce the production of CO<sub>2</sub> by 800kg per year.

A manual 2.0 litre capacity car uses 500 litres less of fuel and produces 1.6 tonnes less CO<sub>2</sub> doing 25,000km per year than does a manual 3.8 litre car.

To absorb the CO<sub>2</sub> produced by driving 16,000km per year it is necessary to plant 17 trees each year.



*A simple way to think about our lives and our impact on the environment -*

## ME WE

### Materials

*we consume metals, plastics, timber, grains, oil, gas, coal, petrol, water.*

### Energy

*we use electricity - burning coal or natural gas; vehicles - burning petrol, gas & diesel; heating & industrial processes - burning gas or using electricity*

### Waste

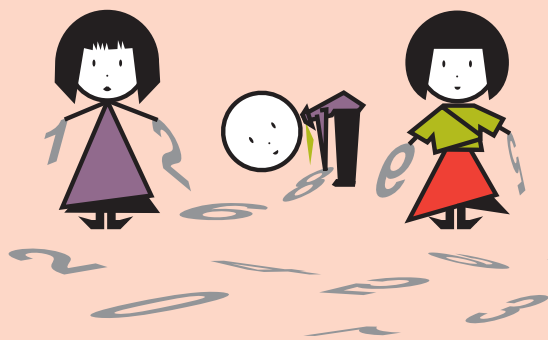
*we generate household rubbish – plastics, paper, cardboard, food containers, food waste, garden/lawn cuttings, & building materials*

### Emissions

*Gas & wood fires; vehicles; car washing & maintenance, paint clean up; litter.*

☺ cigarette butts are the most common pieces of litter & represent about 1/3 of the quantity of litter.

# litter facts



☺ if 700 people each pick up two bits of litter each day of the year, this would be 511,000 pieces of litter kept out of the stormwater, rivers, bays and our environment.

# minimising waste

## reduce

☺ 688 million plastic supermarket bags were used in Victoria in 2001. If only 1% of these, 6.9 million, get into the rivers & bays, they would cause a problem for wildlife & ecosystems

packaging and wrapping of purchases; take your own reusable shopping bag; buy just the right amount of food and groceries you require; buy in bulk (reduces packaging waste & is more cost efficient).



## reuse

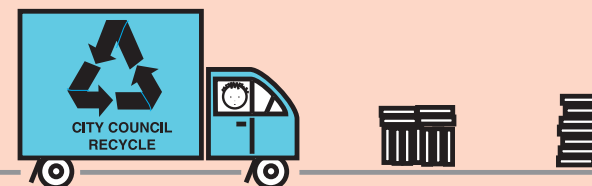
use handkerchiefs instead of disposable tissues; for lunch use reusable containers to replace disposable plastic wrapping; always use reuseable cups, plates and utensils.

☺ an airtight sandwich box will save about 200 plastic wraps per person in a working year



## recycle

items that cannot be reused. Ask your local council what materials can be collected for recycling.





## set up a system

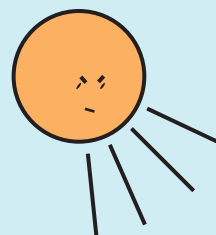
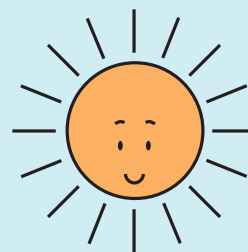
Have a bin for each different type of material waste. Your local council should supply bins for collecting paper, cardboard, bottles, plastic containers and steel and aluminium cans. For food and green waste, set up and use a compost bin (compost is great for your plants).

Sort out papers, cardboard, bottles, etc. for the council recycling collection.

You may produce a lot of some other materials (e.g. corks, coat hangers, metal, clothes, etc.) Get an idea of how much waste you produce then try to find someone who can reuse or recycle it.

Recycle your old phone books. Phone books can now be recycled through domestic and commercial paper recycling systems, so you can put them through your council system.

😊 *about 30% of what we throw out such as weeds, leaves, lawn clippings, cooking oil & food scraps can be composted - it's good for the soil too.*



## summer

Use fixed shading to reduce overheating from direct sunlight.

Plant deciduous plants on northern and western sides to provide summer shade.

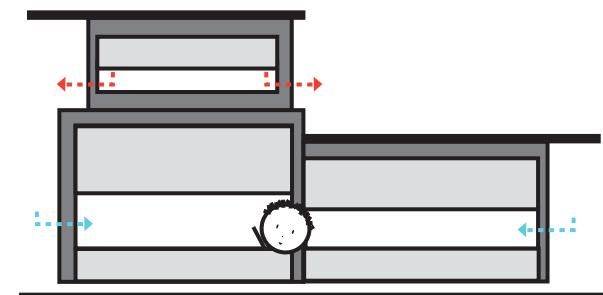
Use adjustable shades (blinds, curtains, shutters, etc.) to keep out hot morning and afternoon sun.



Ensure natural ventilation moves cool air into the building and hot air out.

Block out the hot direct sunlight and its radiant heat energy.

Use natural ventilation – open windows to let in cool air; open high windows to let out hot air – to cool. (This includes using effective insect screens).



## winter

Seal gaps and cracks around skirting boards, architraves and cornices.

Having insulation in the ceilings, walls and floors can save you substantially per year in reduced energy costs.

Cover windows properly with appropriate heavy fitting drapes or blinds sealed above the track with devices such as a pelmet.

Consider installing double glazed windows. This reduces heat loss through windows.

Consider reversible ceiling fans for high ceilings to move warm air that has risen and return it back to floor level.

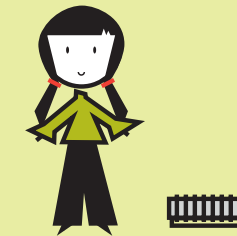
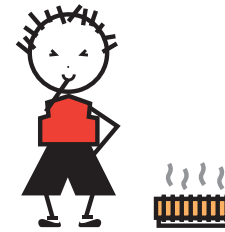
When buying a wood heater choose one certified to AS4013 and with a low emission factor, and make sure it's the right size.

(A big heater burning slowly produces more smoke than a small heater burning fast.)

Use energy efficient compact fluorescent globes.

Turn off unnecessary lights and equipment.

Minimise the area being heated by closing doors to other areas of the home. This can cut around 20% off your heating costs.



Set the thermostat in your living areas to a reasonable temperature, 18 – 20°C during winter. Every degree increase will boost your energy bills by 15%.

Put on a jumper instead of turning on the heating.

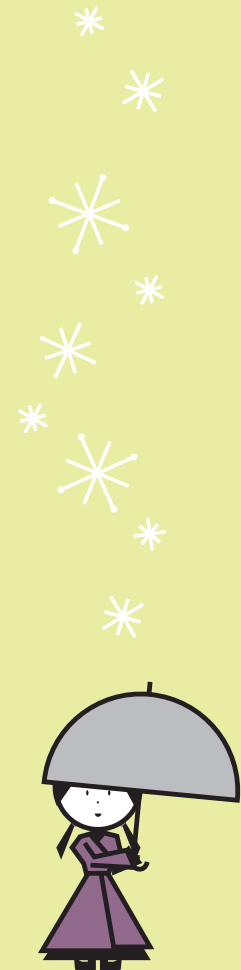
Turn off your heater overnight and when you are out during the day.

Install a time switch to program your heater to turn on automatically 10 minutes before waking up in the morning or arriving home in the evening.

Maintain your heater in good working order, keep reflectors clean and free of dust, and clean air filters and fans regularly.

Ensure that night window coverings are closed when heating at night.

Utilise the sun through north-facing windows on sunny winter days to let in free natural heating.





## polluting, unhealthy smoke & particles

☺ open fires are up to five times more polluting than wood heaters that meet the Australian Standards (AS4013)

If you use an open fireplace, only use it on special occasions - they are less efficient than wood heaters.

Use dry, seasoned untreated wood. The logs should make a 'crack' when struck together, not a 'dull thud'.

Stack wood under cover in a dry ventilated area.

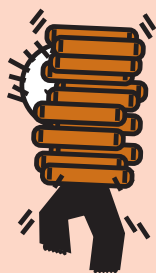
Use small logs and place them in your heater in a way that ensures air can circulate freely.

Burn the fire brightly. Run the heater on a high burn rate (air control fully open) for 5 minutes before and 15-20 minutes after adding logs.

Don't let the heater smoulder overnight - keep the air control open enough to maintain a flame.

Keep the heater and flue clean to ensure good airflow.

Be aware of the source of your wood. Some wood harvesting is threatening remnant vegetation and animal habitats.



☺ smoke from domestic wood heating produces three times the amount of fine particles than emissions from cars and trucks

☺ it takes only one litre of oil to contaminate one million litres of water

## kitchen



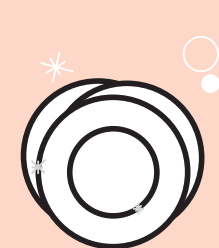
Wash the dishes with biodegradable detergent.

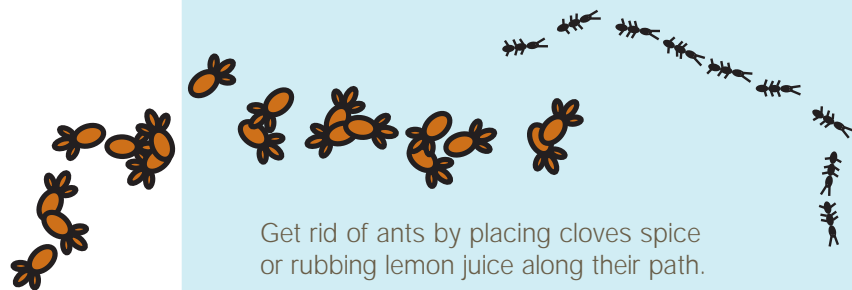
Don't wash or empty unwanted household chemicals, paints, or oils down water drains. Use the household chemical collection days organised by your council and Ecorecycle.

Clean general kitchen grime with a damp cloth, some bicarb and a spray of white vinegar.

Clean floors with one cup of white vinegar to half a bucket of warm water.

Clean burnt saucepans by heating some white vinegar, salt and water on high gas for 10 minutes - wash when cool.





Get rid of ants by placing cloves spice or rubbing lemon juice along their path.

Deodorise your fridge by wiping the inside with vanilla or place a small amount of bicarb in an open container.

The kitchen is a good place for your compost, paper and glass/plastic recycling bins.

## laundry

Try soaking clothes in one cup of lemon juice to half a bucket of water (bleach is harmful to the environment).

Only do a load of washing when the machine is full to reduce water and energy consumption.

Hand wash clothes in a sink or bucket if you have only a few items.



☺ *the toilet half flush saves 36,000 litres each year for a four person family*

☺ *installing a 2A shower head instead of a 1A will save about three litres of water per minute. Which for a family of four, (taking four minute showers) will save about 17,000 litres per year which is about a 25% saving*

Don't use the toilet to dispose of tissues, cotton buds, paint solvents and other substances.

Use the toilet half-flush as much as possible, it usually works.

Try not to use a lot of toilet paper.

Have short showers and install low-flow showerheads in bathrooms.

White vinegar is a good disinfectant to clean bathroom surfaces. Sprinkle some bicarb for extra cleaning power.

Leave one cup of white vinegar in the toilet bowl and scrub.

Don't leave the tap running whilst brushing teeth. It can waste up to 120 litres of water per day.





Wash the car with a sponge and bucket, not a running hose. (saves 400 litres per wash)

Sweep driveways and footpaths, rather than hosing them clean.

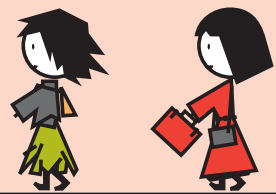


## transport

Walk, cycle or use public transport rather than your car.

Combine your trips so you travel less often.

Buy locally made produce and seasonal produce. The further a product is transported, the greater the impact on air pollution and greenhouse gas emissions.



☺ you can save 10-15% on your fuel consumption by following these principles taken from the Daimler-Benz Eco-Training Program

## reduce fuel consumption & save \$'s

Never leave the car engine running unnecessarily.

Use the overrun technique (for slowing/braking) - when it is safe to do so, slow down by just taking your foot off the accelerator and let the car's friction slow it down.

Shift up a gear whenever / as soon as possible.

Start the engine without touching the accelerator, and move off at once.

Maintain a steady speed. Avoid high speeds.

Don't keep racks/attachments on the vehicle or take unnecessary loads.





☺ calculate your vehicle's impact on the environment @:

[www.epa.vic.gov.au](http://www.epa.vic.gov.au)  
[www.racv.com.au](http://www.racv.com.au)  
(under Home > Car Maintenance > Cars & the Environment)

Keep tyres at maximum recommended pressure.

Keep your car regularly tuned and maintained.

The RACV and the EPA have produced a Car EcoMeter on the web, which shows how changes in service and driving can change your costs and impacts on the environment.

## global shortages

If current patterns of development continue, nearly half of the world's people will suffer from water shortages within the next 25 years. The use of fossil fuels, along with greenhouse gas emissions, will grow, and the world's forests will continue to disappear.

*A United Nations report prepared for the World Summit on Sustainable Development (August 2002).*

☺ human beings in one year consume the same amount of coal, oil and gas it took nature over one million years to produce

## further information

Sustainable Energy Authority  
Phone: 1300 363 744

Environment Protection Authority  
[www.epa.vic.gov.au](http://www.epa.vic.gov.au)

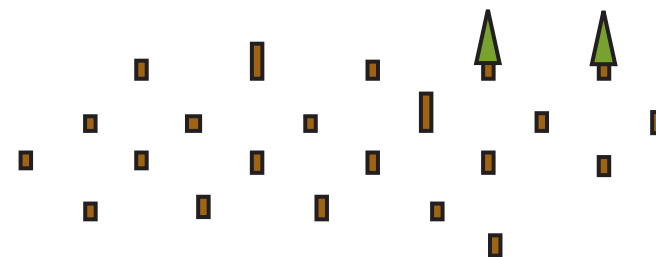
EcoRecycle Victoria  
[www.ecorecycle.vic.gov.au](http://www.ecorecycle.vic.gov.au)

Federal Government  
Australian Greenhouse Office  
[www.greenhouse.gov.au](http://www.greenhouse.gov.au)

Environment Australia  
[www.ea.gov.au](http://www.ea.gov.au)

## our eco-footprint

The world already uses 1.3 times the earth's capacity to support people. If all 6 billion people in the world had the same consumption as Australians, then we would need 3 earths to support it. In addition, by 2100, it is predicted, there will be an extra 5 billion people to our population.



*Every effort has been made to ensure the information in this publication is accurate. The information used in this publication is relative to Australia, unless stated otherwise. Schiavello Group Pty Ltd accepts no responsibility for errors in fact, image, illustration or any reliance upon this publication. Schiavello Group Pty Ltd reserves the right to change any or all details without prior notice. No part of this publication can be reproduced in any manner or form without permission.*